

luxe.

interiors + design®

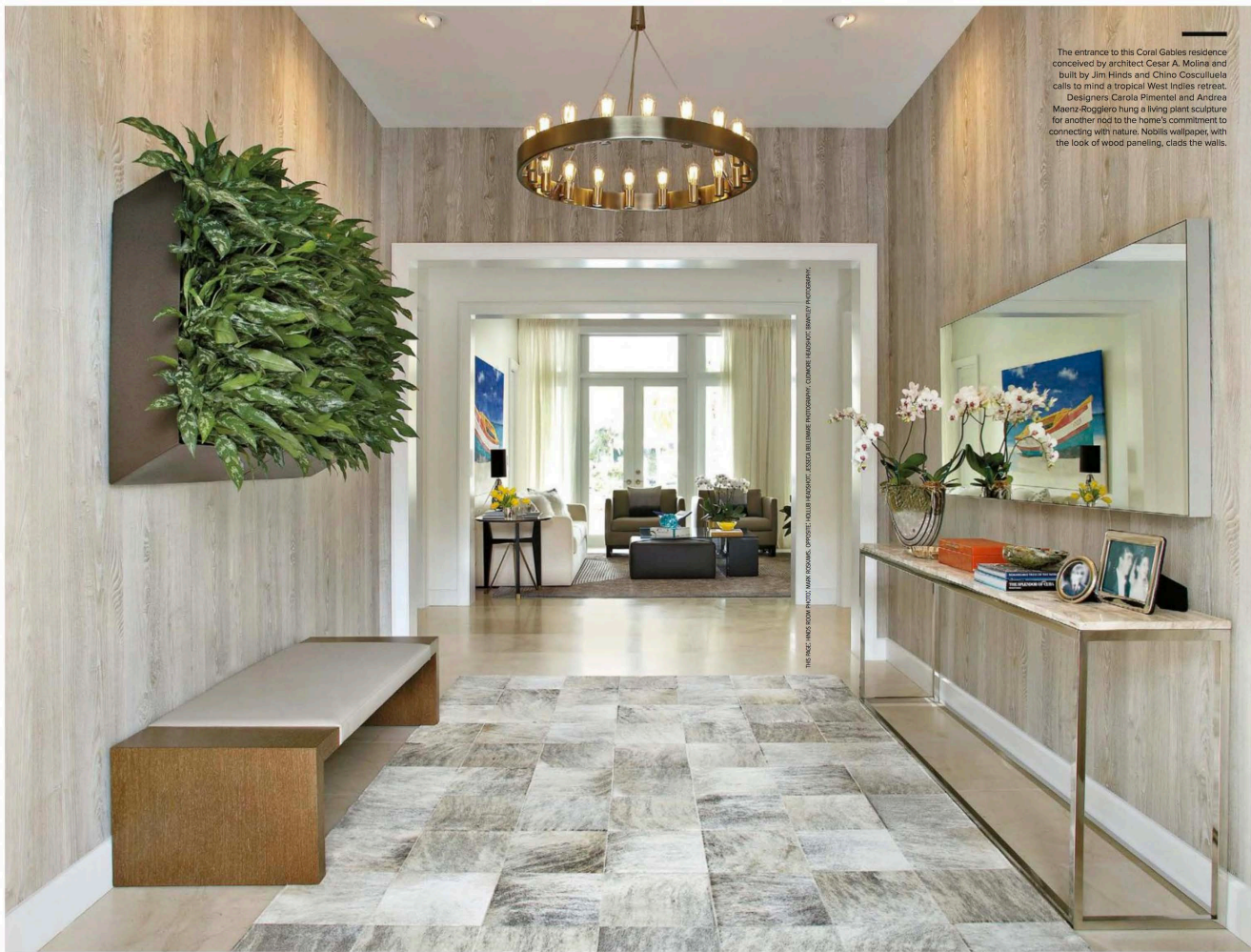
INTERIORS/ARCHITECTURE/INSPIRATION

DESIGN

2017



GOLD LIST EDITION



The entrance to this Coral Gables residence conceived by architect Cesar A. Molina and built by Jim Hinds and Citino Cosculluela calls to mind a tropical West Indies retreat.

Designers Carola Pimentel and Andrea Meenz Roggiero hung a living plant sculpture for another nod to the home's commitment to connecting with nature. Nobilis wallpaper, with the look of wood paneling, clads the walls.

THE HINDS AND HOWARD PHOTO: MARK ROMANUS; OPPOSITE: HOLLUB; HEADSHOT: JESSICA WILLIAMS; PHOTOGRAPHY: COLUMBA; HEADSHOT: BRANDEY PHOTOGRAPHY.



CLOCKWISE FROM TOP LEFT:
Jim Hinds,
Helene Hollub,
Terry Cudmore

MATERIAL WORLD

Few things prove as important to establishing the feel of a space than choosing the right materials. The rustic warmth of reclaimed wood lining a wall provides instant character, while the appearance of marble or concrete can transform a space with a modern or industrial lean. In addition to aesthetics, as builders discuss here, the right materials can open up new design possibilities, offer sustainable solutions and provide a tactile, hands-on connection with our built environment.

Jim Hinds: The wood-like Nobilis wallpaper in the foyer of this home on the Coral Gables Waterway (shown) definitely adds interest immediately upon entering the space. But what I love most about this house is that we excavated the basement area and harvested natural oolite stone, which you see on the outside. There's a profound, literal connection to the earth there. We took the natural material and gave it an almost Mondrian-like finish, and it looks like the house is coming from right out of the ground. I've rarely seen that kind of exposure of natural stone used in such a creative, repurposed way.

Helene Hollub: The newest, most memorable material I have used lately is Resysta. This product is a fiber-reinforced hybrid substance produced from sustainable rice husks and oils and is both environmentally friendly and extremely weather-resistant against sun, rain and salt water. I was able to use it on the outside of a custom home in horizontal boards and wrap it on the inside as well for continuity and design flow. I am also so excited for the new wood specialty veneers and

wallcoverings coming out. Donghia has an amazing line with Maya Romanoff that has been out for a while, but now, other manufacturers like Phillip Jeffries are getting onboard, supplying beautiful ornate woods, cork and earthy coverings. It's the perfect accent for grounding the modern aesthetic.

Terry Cudmore: For building materials, I'd have to say that some of the new porcelain, glass and ceramics tiles that we have been using instead of natural marble or granites are incredible to work with. Porcelain tiles that look like wood are really trending right now; they are amazing, and we have been incorporating them indoors for flooring as well as outside in ceilings, walls and decking. The quality of man-made materials has improved drastically. Half of our countertops are made up of products from such companies as Caesarstone and Neolith. Sustainability is also very important. The combination of new cellulose insulation, high-efficiency air conditioning and high-performance windows has greatly reduced energy use. That combined with homes that use only LED lighting make for spaces that are far more energy-efficient.